

# WebDE

Drawing on years of expertise processing millions of documents, Xerox has re-engineered the data capture process by releasing the next generation of data entry software. WebDE is a world-class suite of tools for data entry transaction processing. It incorporates both a powerful GUI development tool and a core data entry engine.



WebDE incorporates Web-browser technology that enables operators to perform data entry functions without extensive software installation. We've built many data edits and other "data scrubbing" functions into the core of the system. This means developers can focus their efforts on unique customer requirements.

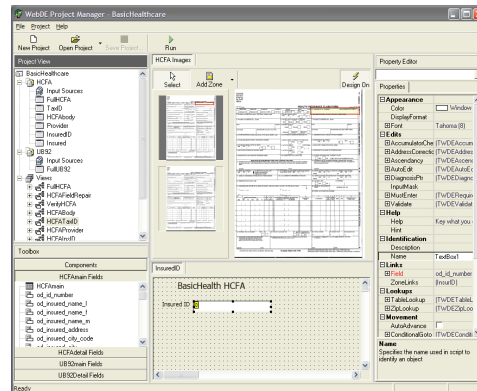
## Features and Benefits

### Browser-based architecture

- Allows quick, easy deployment and maintenance, for a flexible, scalable data entry solution.

### Flexible document/view definition

- Varied views into the same data; you can focus on your approach to the job, instead of being restricted by the software.
- Single view may represent all document fields or a single field spanning multiple documents.
- Enhanced scrolling and automatic zone movement yield cost savings, better quality and less time keying data.



### Photo stitch mode

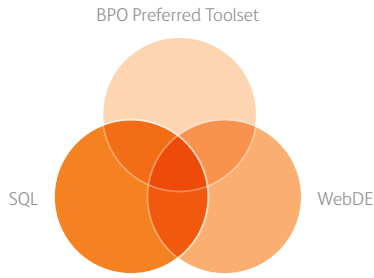
- Snippets of individual images displayed together increase speed and accuracy.

### Built-in editing

- ZIP code lookup, customizable field validations, and database lookups contribute to improved quality.

# WebDE

## Integration



WebDE integrates seamlessly with the suite of products that make up our entire BPO Preferred Toolset, which comprises:

- Machine data capture
- Data, image and media repository
- Workflow process regulator
- Transaction exchange applications.

All data transfers and requests use Dot Net remoting. SOAP (Simple Object Access Protocol) is the default remoting protocol, used by the .NET framework. Captured data is stored in XML-based files on the file server.

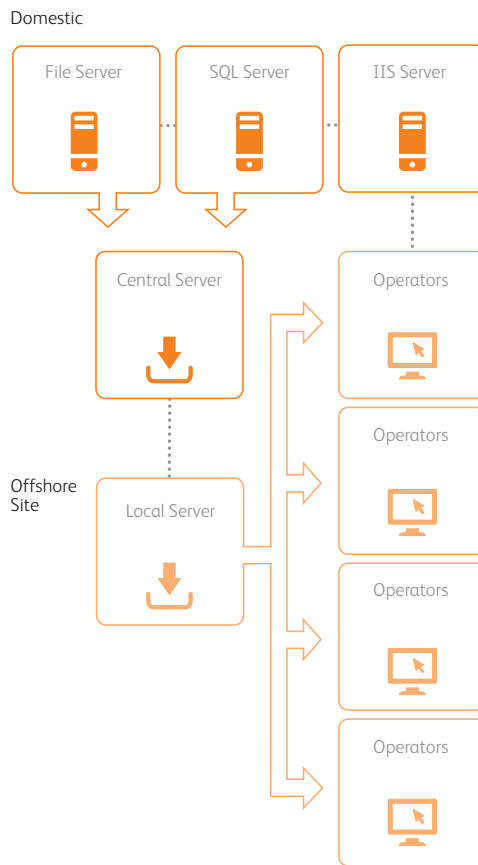
## Security and Scalability

WebDE uses the login user names and encrypted passwords. You can gain extensive scalability by implementing additional clients.

## Easy Configuration

WebDE incorporates the “Project Manager” configuration utility, which enables “one-stop shopping” when setting up new data entry jobs. By increasing speed of setup and data entry, it helps reduce the time to set up new jobs for BPO customer engagements.

## Architecture



## About Xerox

Xerox is the world’s leading enterprise for business process and document management. Its technology, expertise and services enable workplaces – from small businesses to large global enterprises – to simplify the way work gets done so they operate more effectively and focus more on what matters most: their real business. Xerox offers business process outsourcing and IT outsourcing services, including data processing, healthcare solutions, HR benefits management, finance support, transportation solutions, and customer relationship management services for commercial and government organizations worldwide. The company also provides extensive leading-edge document technology, services, software and genuine Xerox supplies for graphic communication and office printing environments of any size. Xerox serves clients in more than 160 countries.

For more information, visit [www.xerox.com](http://www.xerox.com), [www.news.xerox.com](http://www.news.xerox.com), [www.realbusiness.com](http://www.realbusiness.com) or [www.xerox.com/businessservices](http://www.xerox.com/businessservices). For investor information, visit [www.xerox.com/investor](http://www.xerox.com/investor).